

Contact: Suzanne Toomey
Public/Media Relations Coordinator
Phone: (440) 703-2304
Fax: (440) 439-4093

Release Type: Software
Release Date: Immediate
Web: www.iotech.com
E-mail: sToomey@iotech.com

eZ Series Post-Acquisition Analysis Software

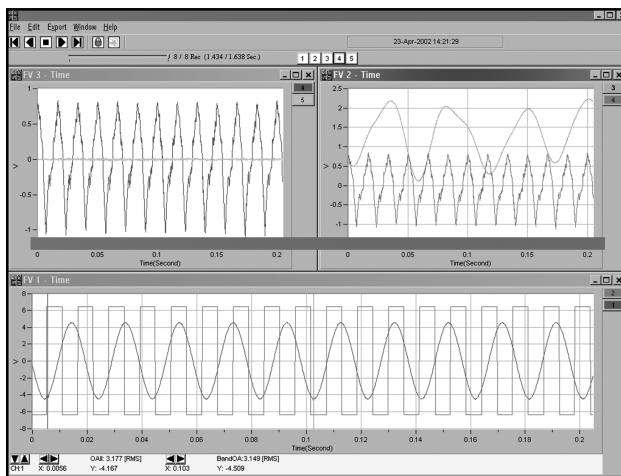
Software adds frequency- and time-domain analysis capability

CLEVELAND, October 2002 — IOtech has announced the release of its eZ Series™ software for post-acquisition analysis. This software family is compatible with the entire line of IOtech data acquisition products from PCI plug-in boards to Ethernet-based data acquisition modules.

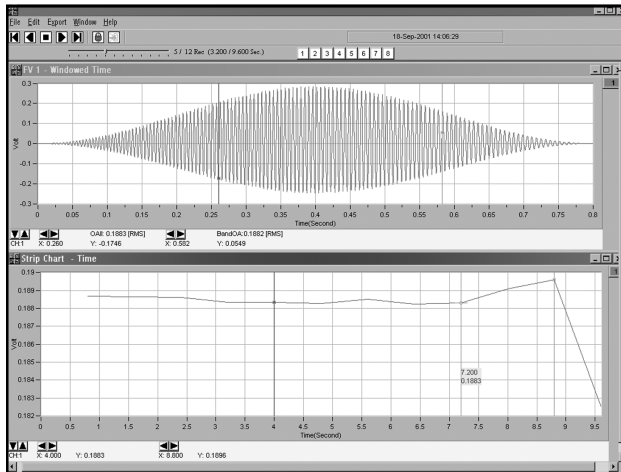
The eZ product family is integrated directly into IOtech's *Out-of-the-Box™* applications to provide a powerful and easy-to-use post-acquisition analysis capability in an *Out-of-the-Box™* solution. Both the *Out-of-the-Box™* applications and eZ post-acquisition products are operated via a series of set-up screens, where acquisition and analysis parameters are selected through simple fill-in-the-blank style screens. No programming skills are required to operate *Out-of-the-Box™* View or eZ applications.

eZ-PostView

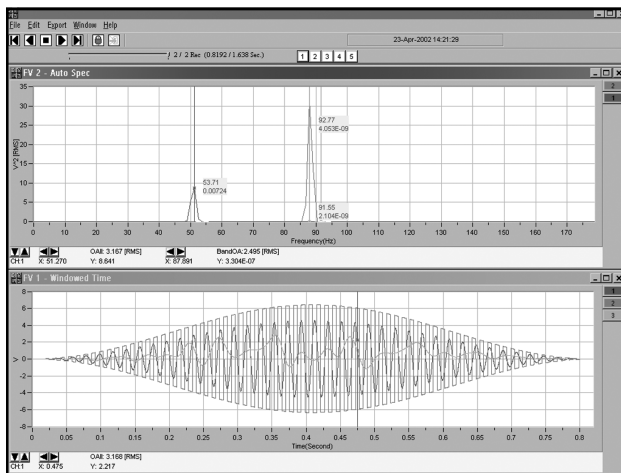
eZ-PostView is a time-domain post-acquisition data viewing package which is integrated and ready to use from within a View package when it is installed. It features up to 8 time domain function windows, which can be tiled by the user for easy display customization. Each time-domain function window can contain up to 16 distinct channel traces.



eZ-PostView allows you to view and tile multiple trace windows in any configuration you wish. Each window can contain up to 16 distinct channel traces.



eZ-TimeView automatically synchronizes strip chart windows with function windows and will scale and zoom each window so that various aspects of the data can be analyzed simultaneously.



eZ-FrequencyView allows you to simultaneously display frequency and time domain data from the same data set. It also allows you to view transfer function displays along with time function, frequency function, and strip chart data.

eZ-TimeView

Like eZ-PostView, eZ-TimeView is supported with all IOtech data acquisition View packages. Additional features include simulated data playback which allows the user to display windows in real-time or in single steps. The data strip chart displays add powerful data scrolling, scaling, zooming and cursor synchronization capabilities.

eZ-FrequencyView

With all the features of eZ-PostView and eZ-TimeView, eZ-FrequencyView adds powerful frequency domain display and analysis for a wide variety of frequency domain analysis applications. Both single channel and cross channels are supported as well as function displays for spectrum, auto spectrum PSD, and strip chart.

Pricing and Availability

eZ Series software packages are available for immediate ordering.

Product	Description	US List Price <i>included with all IOtech View applications</i>
eZ-PostView	Time-domain post-acquisition data viewing software for all post-acquisition software packages	
eZ-TimeView	Time-domain analysis software for all post-acquisition software packages	\$999
eZ-FrequencyView	Frequency-domain analysis software for all post-acquisition software packages	\$1999

About IOtech

IOtech produces data acquisition hardware and software for use in PC-based test and measurement, and industrial automation systems. Its products are used in research and manufacturing facilities and are sold throughout the world. IOtech, Inc. is located at 25971 Cannon Road, Cleveland, Ohio, 44146; Telephone: (440) 439-4091; Fax: (440) 439-4093; E-mail: sales@iotech.com; World Wide Web: www.iotech.com.

###

eZ-PostView, eZ-TimeView, eZ-FrequencyView and eZ-Analyst are trademarks of IOtech, Inc.